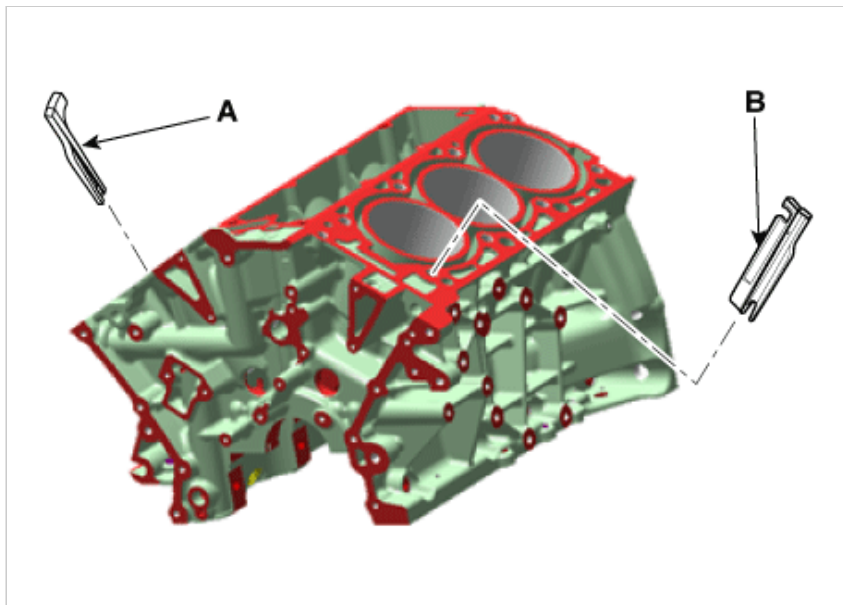




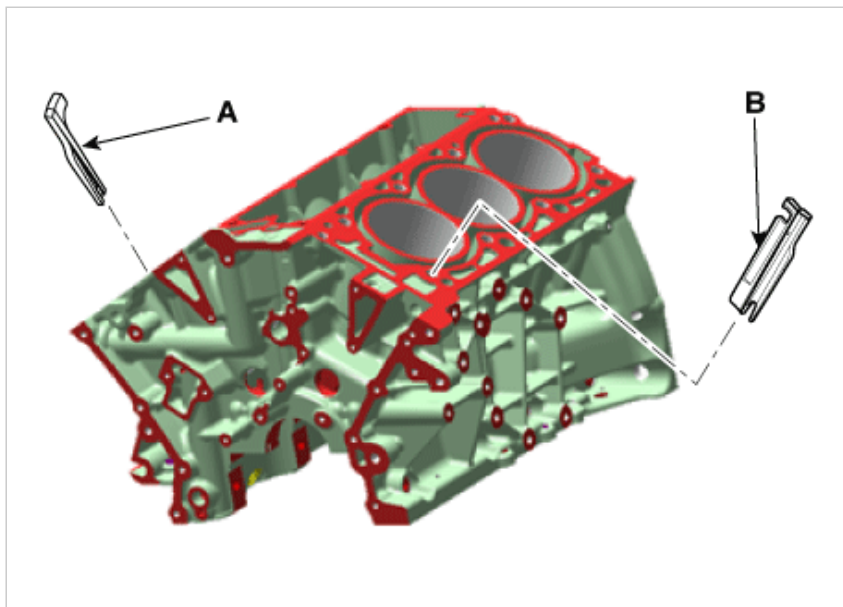
Removal

1. Remove the LH/RH cylinder head assembly and gasket.
(Refer to Cylinder Head Assembly - "Cylinder Head")
2. Remove the water jacket separator #1 (A), #2 (B).



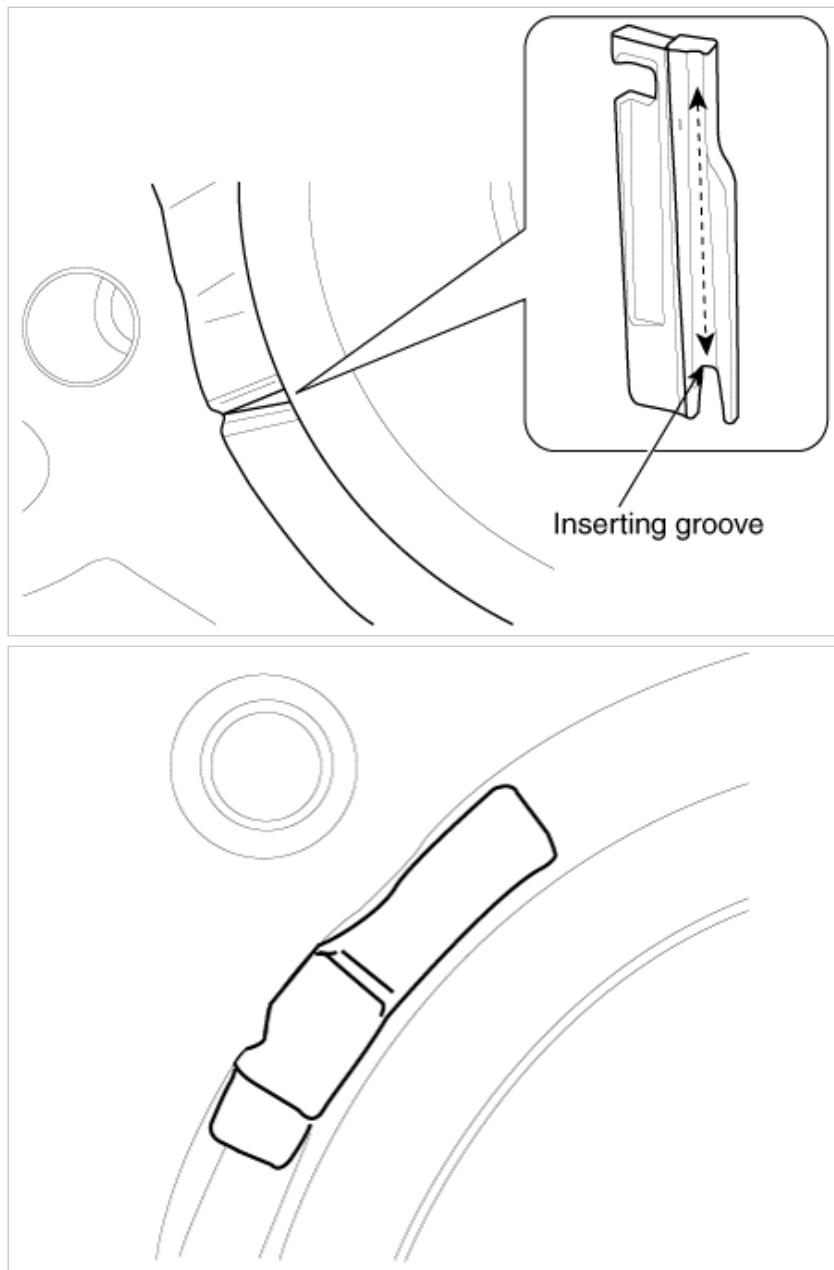
Installation

1. Install the water jacket separator #1 (A), #2 (B).



NOTICE

Insert the separator by aligning it with the block inner side protrusion. It must be below the cylinder head installing surface.



2. Install the LH/RH cylinder head assembly and gasket.
(Refer to Cylinder Head Assembly - "Cylinder Head")